

## Meet our Trustees

### ***Tim Stevenson – Chair of Trustees***

Tim joined AllAboard! as the Chair of Trustees in 2014. Tim has played a considerable part in the development of Bristol. After becoming a chartered surveyor, he became a partner to a successful Bristol-based firm at the age of 23; which led to him becoming the UK Board Director and Regional Managing Director - ultimately responsible for bringing 20,00 jobs into Bristol by convincing large companies to relocate to Bristol. When Tim retired he remained business-active as a director for five companies and gave generous amounts of time and expertise to multiple charities, including setting up his own charitable grant. He is also a keen sailor and is passionate about supporting disadvantaged children, making him a great asset to All-Aboard.



### ***Steve Evans***

Steve is a retired teacher and SENCO. He has over 50 years of experience in teaching and working with youths with special needs. Steve has played a fundamental role in the development of All-Aboard! and has been involved from the start. He is keen to support individuals in overcoming barriers and achieve tasks they thought were not possible. He regularly volunteers to maintain and build our boats, and enjoys rowing and sailing as a pastime.



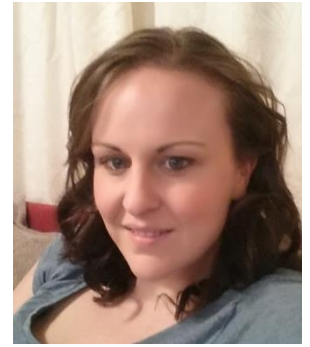
### ***Michelle Holder***

Michelle learnt to sail in our after-school clubs at the age of 8 years, when the charity was first evolving. She then went on to run Wednesday Night Club with Jenny Evans for a number of years. She has experience of instructing individuals from a range of backgrounds, including children from the Deaf community. Her occupation is a team leader in banking for a company called Vaultex. Michelle has a young family and her role as a trustee involves responsibility over finance affairs.



### ***Jenny Evans***

Jenny learnt to sail at aged 8 in one of the after-school clubs, when the charity was first evolving. She has been an instructor for a number of years, and previously volunteered her time to run Wednesday after-school club with Michelle Holder. She works at Vaultex. She brings multiple skills, and is trained in Child Protection.



### ***Simon Chapman***

Simon is a retired accountant who was the West region senior audit partner at Pricewaterhouse Coopers. He is a lifelong sailor who has raced dinghies since his childhood and also has significant offshore experience including an Atlantic crossing.



Simon joined the Trustees of AllAboard early in 2016 and is passionate about the benefits the organisation brings to the groups of people who use its services. In addition to his role at AllAboard, Simon is a trustee of Bristol Music Trust and of Bristol Old Vic Theatre School and is president of Chew Valley Lake Sailing Club. Simon brings skills and knowledge in finance and accountancy following his 30 year career in accountancy.

### ***Gill Hannan***

Gill has been involved with Sailability since 2004 and worked as the Administrator of All-Aboard from its start in 2013. She is now stepping back from her admin role to take a Trustee role. Having seen how Sailability has changed lives and perceptions, her particular interests are making opportunities available to all to participate in watersports and overcoming any physical or emotional barriers experienced by people with disabilities. She is also a Trustee of the Scobel Trust.

